

Customer :

customer

Customer part :

customer part

Comment :

Comment

S1=8.84

S2=8.42

Tmax=450

Tp S2=489.0

PI=0.51

HI=124

Sample =1779.30

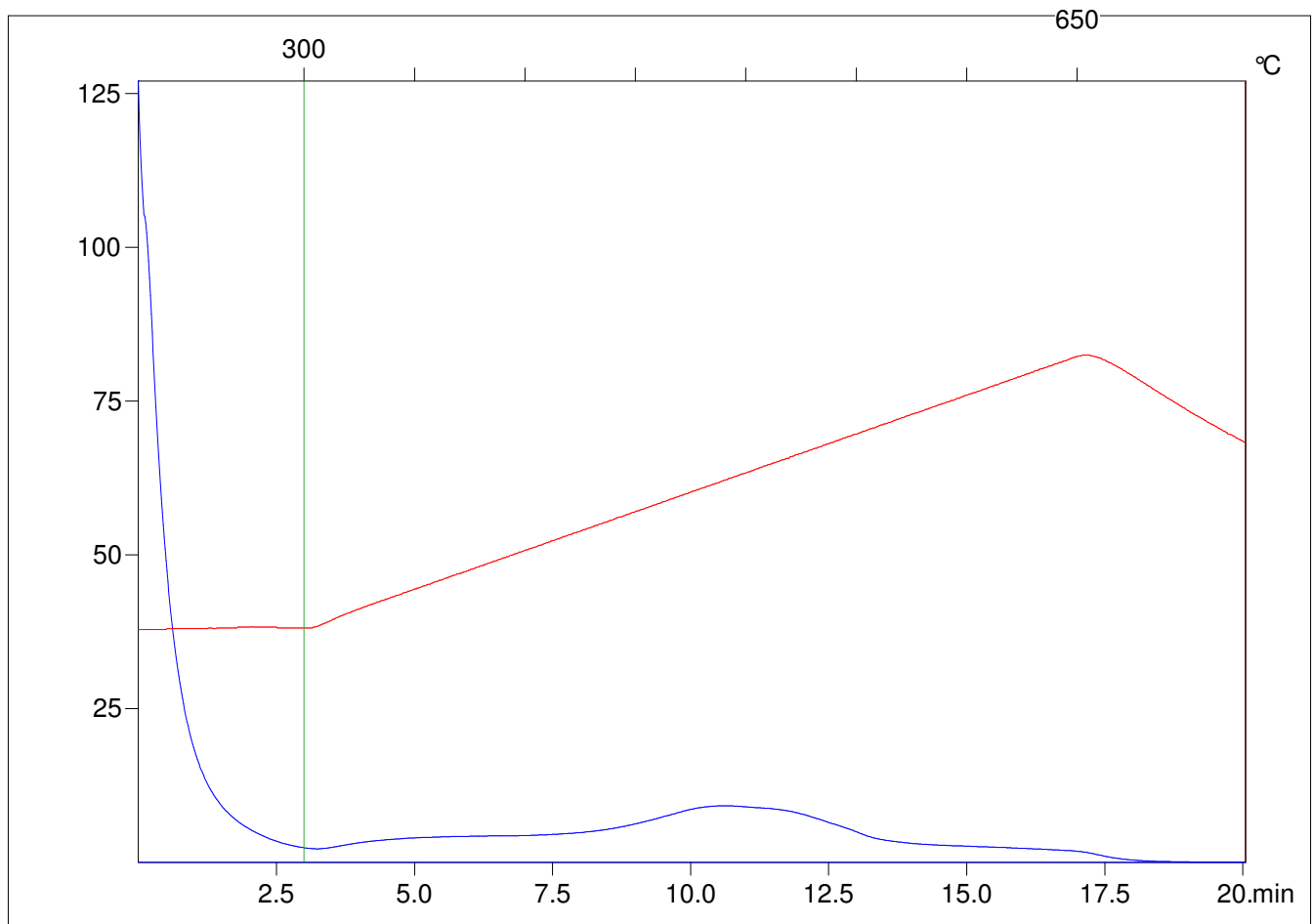
Method =Bulk Rock

Cycle=Basic

KFID(10\*9)=1444

Qty =70.3

TOC=6.8



C:\VINC\PK3\_1792\PK064.R00 : FID pyrolysis graphic

State Ok

Pyro Status Negative value

Oxi Status Negative value